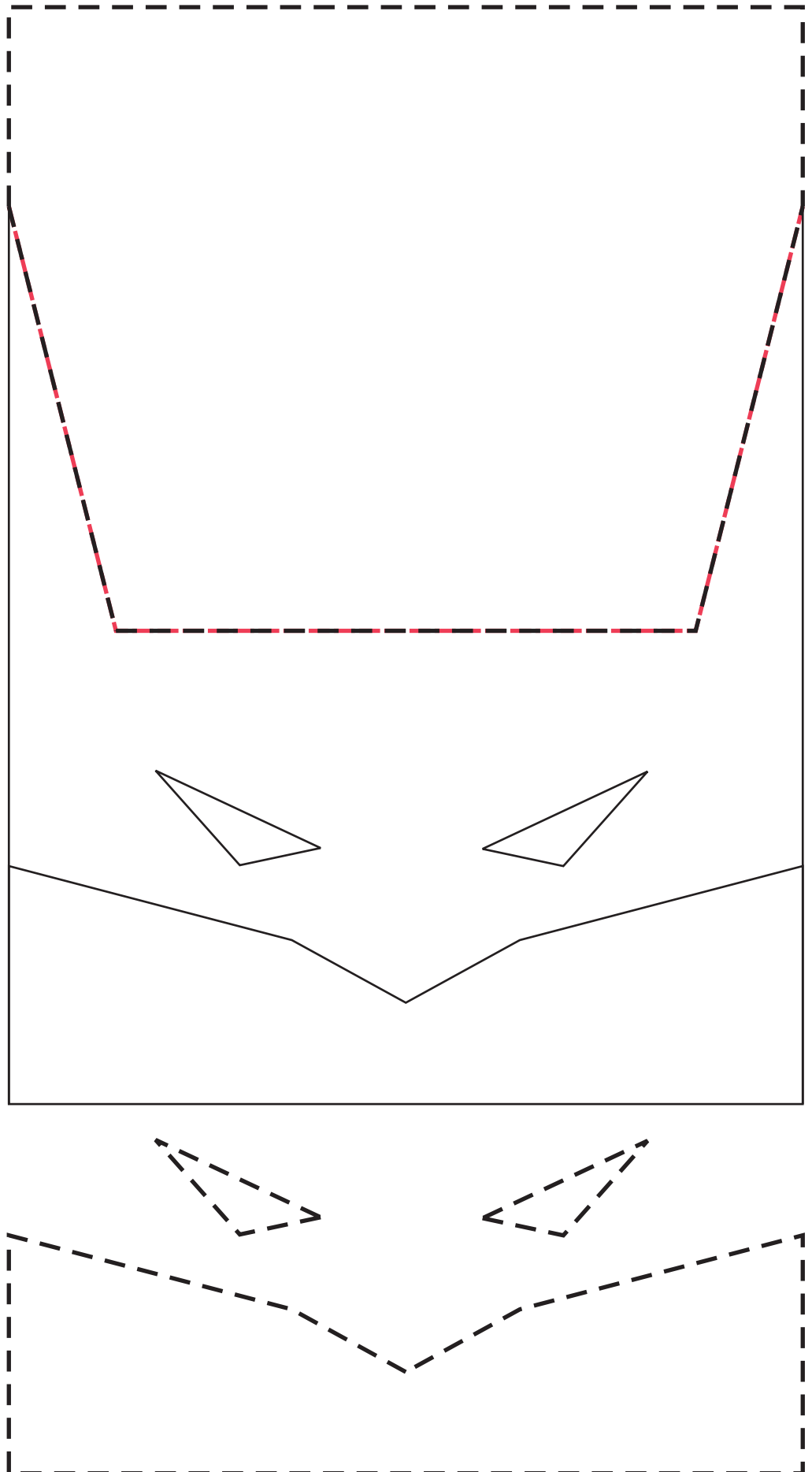


Batman envelope party favor

1. Get a black 5"x7" envelope. Seal the back.
2. Cut this template on the dotted lines.
3. Place template over the front of the envelope and cut along the red dotted lined area.



4. for the eyes and face area cut on the dotted lines - use this as a template over a piece of paper. I like to use white for the eyes and cream for the face.

5. Glue those pieces into position as seen in the face template above.

6. Now you can fill Batman's head with treats!